



MILLMERRAN SHOW SOCIETY INC.

88th SHOW

1 - 2 MARCH 2025

PAVILION SCHEDULE

JUDGING FRIDAY 28 FEBRUARY 2025

***** Trophy donated by Chris & Annie Muir *****

*Awarded to Adult Exhibitor gaining highest points in Pavilion Sections
(Excluding Produce Pavilion)*

***** Trophy donated by Scott & Catherine Folker*****

Awarded to Junior Exhibitor gaining highest points in Pavilion Sections

***** Trophy donated by Jim & Amelia Stower *****

Awarded to Adult Exhibitor gaining highest points in Produce Pavilion

OPENING HOURS OF PAVILIONS

Saturday 1 March

9:00 am - 6.00 pm

Sunday 2 March

9:00 am - 3.00 pm

PLEASE READ THE SCHEDULE BEFORE ENTERING

- ALL ENTRIES TO BE TAKEN IN PAVILION AS PER SECTION

- PAVILION OPEN WEEK PRIOR TO SHOW:

TUESDAY 12.30PM - 4.30PM

WEDNESDAY & THURSDAY 9.30AM - 4.30PM

OFFICE OPEN ONE WEEK PRIOR TO SHOW - 46951419

MONDAY - THURSDAY 9.30AM - 4.30PM

FRIDAY FROM 7.00AM

PRESIDENT: Matt Clark 0428205487

SHOW SECRETARY: Lyn Kirby 0429954151

COMMITTEE SECRETARY: Karen Dieckmann 0447543149

PAVILION STEWARD: Kassie Clark 0423512355

WE LOOK FORWARD TO RECEIVING YOUR ENTRIES FOR THE 2025 SHOW
AND REMEMBER: *'YOU HAVE TO BE IN IT TO WIN IT'*

- ALL ENTRIES MUST BE ACCOMPANIED BY A SIGNED ENTRY FORM
- ALL ENTRY FORMS TO BE COMPLETED BY THE EXHIBITOR
- SEPARATE FORM FOR EACH SECTION [NOT CLASS] PLEASE.

Entry Forms available at:

www.millmerranshowsociety.com

Millmerran Community Support Centre or Millmerran Newsagency

- PERSONS WATCHING WHILE JUDGING IS IN PROGRESS *MUST REMAIN SILENT AND NOT SPEAK TO THE JUDGE UNTIL THAT SECTION IS FINISHED*
- PRIZE MONEY TO BE COLLECTED FROM PAVILION OFFICE DURING SHOW WEEKEND [TIMES TO BE ADVISED] - WITH THE EXCEPTION OF SCHOOLWORK, WHICH WILL BE HANDED OUT AT SCHOOL
- ALL EXHIBITS & TROPHIES *MUST BE COLLECTED SUNDAY AFTERNOON BETWEEN 4.00PM & 4.30PM*

THANK YOU



SECTION - ART

Stewards: Lexie Antonio - 46954094 / 0409954015
Leah Collins - 0427951868 Julie Schutt - 46957124 Leesa Antonio - 0427725245

PLEASE NOTE: TIMES FOR RECEIVAL OF ENTRIES

Entries to be delivered to the **ART PAVILION**, MILLMERRAN SHOWGROUNDS **BETWEEN 9.00AM AND 4.00PM THURSDAY 27 FEBRUARY 2025.**

Please note ** If you bring in your Art on Friday it will NOT be accepted**

JUDGING TO COMMENCE AT 1.00PM FRIDAY 28 FEBRUARY 2025

Stewards reserve the right to reclassify or reject any entry.

Stewards will exercise all reasonable care with entries; **however** they will not be responsible for loss or damage while the entries are in their custody.

NB: ALL ENTRIES MUST BE READY FOR HANGING, ie; WITH CORD OR WIRE ATTACHED ACROSS BACK. WORKS ON PAPER MUST BE FRAMED OR FIRMLY MOUNTED. THIS APPLIES TO ALL CLASSES INCLUDING JUNIOR ART.

Exhibitors name, address, title, class number and price (or NFS) must be shown on the back of all exhibits. Commission on sales will be 15%.

The longest side of any entry is not to exceed 130cm. (Including frame)

NB: ENTRIES MUST BE ORIGINAL AND BONA FIDE WORK OF THE EXHIBITOR, EXECUTED WITHIN THE LAST 2 YEARS, AND MUST NOT HAVE BEEN EXHIBITED IN A PREVIOUS MILLMERRAN SHOW.

Exhibitors to be limited to no more than TWO entries per class.

The Judges decision is final.

Entries to be collected from the ART PAVILION between 2.00pm and 4.00pm on **SUNDAY 2 MARCH 2025.** Please make arrangements if you are unable to pick up your Art on that day!

Trophy for Champion Painting of the Show (all entries eligible).

The Kenneth Macqueen Memorial Trophy donated by R.R. & E.L. Macqueen (Value \$200)
Champion Ribbon

Trophy for Best Local Work The Wyn Saal Memorial Trophy donated by the Saal Family

Yvonne Linwood Memeorial Award - Peoples Choice donated by Lexie Antonio from LexArt Studio (Value \$100)



Entry Fees include GST

Prize Money does NOT include GST

Entry Fee Class 1 - 3 \$3.00

Classes 4 - 6 \$2.00

CLASS

- 1 OPEN Any subject / Any medium
First Prize \$75 Second Prize \$25
\$100 Prize Money donated by Robin & Cecelia Krieg
- 2 CONTEMPORARY Any medium
First Prize \$75 Second Prize \$25
\$100 Prize Money donated by Mr Paul Antonio
- 3 WATERCOLOUR (or PEN & WASH) Any Subject
First Prize \$50 Voucher Second Prize \$25
\$50 Voucher donated by Murray's Art & Framing
- 4 STILL LIFE OR NATURE STUDY Any medium
First Prize \$50 Second Prize \$25
\$75 Prize Money donated by Clifford & Julie Schutt
- 5 DRAWING Any Subject
First Prize \$75 Second Prize \$25
\$100 Prize Money donated by Millmerran Pharmacy
- 6 PORTRAIT Any medium
First Prize \$50 Second Prize \$25
\$50 Prize Money donated by Paul & Leanne Brittan



ART - JUNIOR

Stewards:
Leah Collins - 0427951868

Lexie Antonio - 46954094 / 0409954015
Julie Schutt - 46957124

Leesa Antonio - 0427725245

PLEASE NOTE: TIMES FOR RECEIVAL OF ENTRIES

Entries to be delivered to the **ART PAVILION**, MILLMERRAN SHOWGROUNDS **BETWEEN 9.00AM AND 4.00PM THURSDAY 27 FEBRUARY 2025.**

Please note NO ENTRIES WILL BE ACCEPTED ON FRIDAY****

JUDGING TO COMMENCE AT 1.00PM FRIDAY 28 FEBRUARY 2025

ALL ENTRIES TO BE COMPLETED AWAY FROM SCHOOL

Entries must be the original work of the Artist - NOT copied

NB: ALL ENTRIES MUST BE READY FOR HANGING, ie: WITH CORD OR WIRE ATTACHED ACROSS BACK. WORKS ON PAPER MUST BE FRAMED OR FIRMLY MOUNTED. THIS APPLIES TO ALL CLASSES INCLUDING JUNIOR ART.

NO ENTRIES WILL BE ACCEPTED THAT CAN NOT BE HUNG CORRECTLY !!! NO EXCEPTIONS

(PLEASE REFER TO REGULATIONS AS LISTED AT BEGINNING OF ART SECTION)

Entry Free

Prize Money First \$25 Second \$15 Third \$10

CLASS

- | | | | |
|----|----------|-------------|---------------------------------------------------------------------|
| 7 | PAINTING | Any Subject | 6 years & under |
| | | | \$50 Prize Money kindly donated by LexArt Studio |
| 8 | DRAWING | Any subject | 6 years & under |
| | | | \$50 Prize Money kindly donated by Sophie Twidale Art |
| 9 | PAINTING | Any subject | 7-10 years |
| | | | \$50 Prize Money kindly donated by Kir-Roy Contracting |
| 10 | DRAWING | Any Subject | 7-10 years |
| | | | \$50 Prize Money kindly donated by Andrew & Leah Collins |
| 11 | PAINTING | Any Subject | 11-14 years |
| | | | \$50 Prize Money kindly donated by Andrew & Leah Collins |
| 12 | DRAWING | Any Subject | 11-14 years |
| | | | \$50 Prize Money kindly donated by Perry Screening |
| 13 | PAINTING | Any Subject | 15-17 years |
| | | | \$50 Prize Money kindly donated by Perry Screening |
| 14 | DRAWING | Any Subject | 15-17 years |
| | | | \$50 Prize Money kindly donated by Darcie Harris |



Trophy for Champion Exhibit Junior Art

**The John Heckels Memorial Trophy kindly donated by Vivienne Heckels
Champion Ribbon**

Junior Art Encouragement Award kindly donated by Millmerran Newsagency

SECTION - FLORAL ART

Stewards: Katrina Grundon - 0428951425

Shirley Gunning - 0498730149

Stewards would like ENTRIES to be listed by 4.30pm THURSDAY 27 February 2025 as this allows planning for space - but EXHIBITS can be brought in up to 9.30am Friday 28 FEBRUARY 2025

Pavilion open: Tuesday 12.30pm - 4.30pm Wednesday and Thursday 9.30am - 4.30pm.. Separate Entry Form for each Section (Not Class), please.

Entries must be staged by 10.00am Friday 28 February 2025

NO ENTRIES TO BE REMOVED BY EXHIBITORS.

STEWARDS WILL GIVE ALL ENTRIES TO THE EXHIBITOR BETWEEN 4.00PM - 4.30PM ON SUNDAY 2 MARCH 2025

CONDITIONS

No artificial plant material permitted.

Additional Foliage, Drapes, Bases and accessories may be used unless otherwise stated.

Artificially coloured and preserved plant material allowed.

DEFINITION OF PLANT MATERIAL FROM THE AUSTRALIAN FLORAL ART

ASSOCIATION MANUAL:

Any vegetable matter including fresh, dried, preserved, native, and made up plant material, flowers, foliage, fruit, vegetables, air and marine plants. All may be artificially coloured unless prohibited by the show schedule.

Entry Fees include GST

Prize Money does NOT include GST

OPEN SECTION

Entry Fee \$1 unless otherwise stated

Prize Money First \$5 Second \$3 unless otherwise stated

**Trophy for Champion Design, Joyce Jones Memorial, donated by John Jones
Champion Ribbon**

**Trophy for Most Creative Design, Jeanette Hutson Memorial
donated by Millmerran Arts & Crafts**

CLASS

1. **'Sunset Colours'** - a design incorporating the colours of the sunset.

2. **'Twist, turn and sparkle'**

3. **'Creative miniature design'**

Scale is the most important principal. All material including container/holder used must be in the same proportion and should not be more than 100mm overall. Bench space allowed 200mm

4. **'Roadside Ramble'**

Go for a walk to find the material you need for your design. Please be careful on the road and do not enter other peoples' property



NOVICE SECTION

For exhibitors who have not won a prize at a previous Millmerran Show Floral Art Section

Please read Entry Details and Conditions on previous page

Entry Fee \$1 unless otherwise stated
Prize Money First \$5 Second \$3 unless otherwise stated

5. 'Foliage Frolic' - A fun design using foliage only
6. 'Branches, Bark and Baubles'

JUVENILE SECTION 12 YEARS & UNDER

Please read Entry Details and Conditions on previous page

Entry Free

Prize Money First \$5 Second \$3 Third \$2 unless otherwise stated
Donated by Captains Mountain Wind Farm

Trophy for Champion Exhibit donated by Shirley Gunning
Champion Ribbon

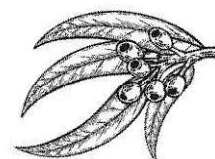
UNDER SCHOOL AGE - 5 YEARS

Please read Entry Details and Conditions on previous page

7. **Miniature Garden - The Farmyard** - using a small tray or similar as a base. Whilst accessories such as farm animals are permitted, your plant material should dominate the garden
8. **Monster, constructed using Plant Materials**
Creatures must be made predominately from plant material and are only to be displayed on their own or on a paper/plastic plate

6 - 12 YEARS

9. **Picture using Bark** - use bark to 'colour' your picture. [Notice how bark from different trees are different colours and textures] Picture to be A4 size on paper or cardboard
10. **Posy in a MUG**
11. **Monster, constructed using Plant Materials**
Creatures must be made predominately from plant material and are only to be displayed on their own or on a paper/plastic plate



SECTION - FOOD & COOKERY

Stewards: Fay Schwarten - 0419673279
Judy Hedges - 46951146 Kay McKinlay - 46951483 Tracey Cooper - 0421628807

Entries must be listed by 4.30pm Thursday 27 FEBRUARY 2025

Separate Entry Form for each Section (Not Class), please.

Exhibits can be brought in up to 9.30am Friday 28 FEBRUARY 2025

Pavilion open: Tuesday 12.30pm - 4.30pm Wednesday and Thursday 9.30am - 4.30pm..

Judging commences 10.00am Friday 28 FEBRUARY 2025

**NO ENTRIES TO BE REMOVED BY EXHIBITORS. PAVILION CLOSSES 3.00PM SUNDAY
2 MARCH 2025. EXHIBITS TO BE COLLECTED BETWEEN 4.00PM - 4.30PM SUNDAY**

Entry Fee: \$1 unless otherwise stated

Prize Money: First \$5 Second \$3 unless otherwise stated.

Entry Fees include GST

Prize Money does NOT include GST

HINTS FOR SHOW COOKERY - Show cookery is judged on neatness of entry as well as taste and texture etc. Scones - dust off excess flour. Cool cakes on a tea towel not directly on a wire rack. Approx size for Pikelets 6 cm Anzac biscuits 6 cm and Lamingtons and Slice 5cm square. Icing for cakes pale not bright. Apply a thin layer and don't use decoration e.g. coconut etc. (Unless the schedule states decorated cake)

**ALL CAKES COOKED IN 20CM TINS UNLESS OTHERWISE STATED
BAR TIN SIZE 21CM X 11CM LOAF TIN SIZE 22CM X 15CM**

- Yvonne Muir Memorial Trophy donated by Ian & Liza Muir for Champion Cake
- Trophy donated by Katrina & Dean Grundon for Most Successful Exhibitor Cat. A
- Trophy donated by Fay Schwarten for Champion Jar Jam or Marmalade Cat. B
- Trophy donated by Fay Schwarten for Champion Jar Relish, Sauce or Chutney Cat. B
- Trophy donated by Tracey Cooper for Champion Fruit Cake to be selected from Classes 7, 8 and 9
- Trophy donated by Matt & Kassie Clark for Highest Points in Novice Classes 39 - 41

Donations towards Prize Money:

Schaumburg Family - in Memory of Mae Schaumburg	\$20	Pumpkin Fruit Cake
Margaret Stevens	Voucher \$10	Sultana Cake
Colleen Mundt	Voucher \$10	Orange Bar Cake
Sam Weaver	Voucher \$10	Collection of Jams
IGA Millmerran	Voucher \$10	Boiled Fruit Cake
IGA Millmerran	Voucher \$10	Sponge Sandwich
Foodworks Millmerran	Voucher \$10	Coconut Ice
Foodworks Millmerran	Voucher \$10	Marshmallow
Foodworks Millmerran	Voucher \$10	Russian Caramels



CATEGORY A

CLASS

BREAD & SCONES

Prize Money donated by Australian Camp Oven Festival Committee

- | | | |
|----------------------------------------|-------------------|-------------------|
| 1. Loaf of Bread - Sourdough | First \$10 | Second \$5 |
| 2. Damper | First \$10 | Second \$5 |
| 3. Plain Scones (4) | | |
| 4. Pumpkin Scones (4) - (Recipe below) | First \$10 | Second \$5 |

Pumpkin Scones

1 tbsp Butter	½ cup Sugar
1 Egg	1 cup mashed and strained Pumpkin
2 ¾ cups SR Flour	½ teasp Salt
a little Milk, if required	

Cream butter and sugar. Add egg, then pumpkin and flour. Roll out to about 1.5cm thick. Cut with a 5cm cutter. Bake in a 190 - 200 degree oven.

FRUIT CAKES & LOAVES

- | | | | |
|------------------------------------------------------------|---------------------------|--------------------|-------------------|
| 5. Date Loaf (bar tin) | | | |
| 6. Sultana Cake (round or square tin) - | First \$10 Voucher | Second \$5 | |
| 7. Pumpkin Fruit Cake (20cm round tin) - (Recipe below) | First \$20 | Second \$5 | |
| 8. Boiled Fruit Cake (round or square tin) | First \$10 Voucher | Second \$5 | |
| 9. Rich Fruit Cake (not iced 20cm square tin) 250g Mixture | First \$25 | Second \$15 | Third \$10 |

Winner of Rich Fruit Cake eligible to compete at Darling Downs Competition to be held at Crows Nest on 17 May 2025

Pumpkin Fruit Cake

180g Butter	1 tbsp. Syrup
1 cup mashed Pumpkin [cold]	1 teasp. Baking Powder
1 teasp. Mixed Spice	2 drops Lemon Essence
1 cup Sugar	2 Eggs
1 tbsp. Sherry	500g Mixed Fruit
Pinch Salt	2 cups Plain Flour

Cream butter and sugar, add eggs- one at a time. Add essence, syrup, pumpkin, flour and baking powder. Lastly add fruit and sherry. Bake in 20cm round tin at 160 degrees C for 1 hour. Reduce heat to 150 degrees C till cooked - approx.. 2 to 2 ½ hours.

CAKES

- | | | |
|----------------------------------------------------------------------------|---------------------------|-------------------|
| 10. Carrot Cake (20cm round or square tin) | | |
| 11. Chocolate Cake (20cm round tin - iced on top only) | | |
| 12. Sponge Sandwich - (to be joined with fine white icing and iced on top) | First \$10 Voucher | Second \$3 |
| 13. Banana Cake (iced on top only) | | |
| 14. Orange Bar Cake (iced on top only) | First \$10 Voucher | Second \$3 |
| 15. Apple Tea Cake - Thermomix (20cm round tin) - (Recipe over page) | | |

Thermomix Apple Tea Cake

Topping:	25g Butter 55g Brown Sugar	60g Rolled Oats 1tsp Cinnamon
Cake:	2 Green Apples, quartered and cored, or 1cup Cooked Apple 230g Sugar 1 Egg 1tsp Salt ½ tsp Mixed Spice 1tsp Bi-Carb Soda	125g Butter 240g Flour 1tsp Cinnamon 1tsp Baking Powder

Preheat oven to 180 bake. Grease a 20cm round tin.

Place all topping ingredients in bowl and mix 10 seconds/sp 4. Chill while you prepare the cake.

Place apples in mixing bowl and chop 10 seconds/sp 5. Scrape down bowl and repeat.

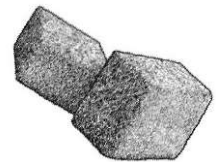
Add butter, egg and sugar and mix 20 seconds/sp 4.

Add remaining ingredients and knead 30 seconds. Scrape down sides and knead 10 seconds.

Pour into cake tin and sprinkle topping over. Bake for 30-40 minutes or until skewer comes out clean.

SLICES - SMALL CAKES - BISCUITS

16. Lamingtons (4) Iced
17. Patty Cakes - Not in papers - Can be cooked in Muffin Tins - Iced (4)
18. Pikelets (4)
19. Date Slice (4)
20. Jam Drops (4)
21. Oat Cornflake Cookies (4) - (Recipe below)
22. Ginger Nuts (4)
23. Muffins - using a Packet Mix (4) - packet to accompany entry
24. Morning on a Tray max.size 30 x 20 cm (4 items) props to be used and will be taken into consideration



Oat Cornflake Cookies

1 ¼ cups Plain Flour	1 cup Rolled Oats
1 ½ cups Crushed Cornflakes	¾ cup Caster Sugar
¾ cup Shredded Coconut	150g Butter chopped
2 tabsp Golden Syrup	1 teasp Bi-Carb Soda

Grease and line two large oven trays with baking paper.

Place flour, oats, cornflakes, sugar and coconut in a large bowl. Mix well and make a well in the centre.

Place butter and syrup in a small saucepan over low heat and stir until melted. Remove from heat.

Combine 2 tabsp. boiling water and Bi-Carb Soda in a small jug, then stir into butter mixture.

Add to flour mixture and stir to combine. Place heaped tablespoons of mixture, 3 cm apart, on prepared trays. Slightly flatten with a fork. Bake in a moderately slow oven (160 degrees C) for about 18 - 20 minutes, or until golden. Cool on trays.

CATEGORY B

BOTTLE SIZE FOR JAMS & PICKLES: 1-1½ CUPS

Judges have the right to open jars and bottles



- 25. Mustard Pickles
- 26. Chutney
- 27. Tomato Relish
- 28. Any other variety Sauce or Pickles
- 29. Marmalade
- 30. Peach Jam
- 31. Grape Jam
- 32. Fig Jam
- 33. Plum Jam
- 34. Tomato Jam
- 35. Apricot Jam
- 36. Collection of Jams (3 varieties) **First \$10 Voucher** **Second \$5** **Third \$3**
- 37. Lemon Butter
- 38. Any other variety Jam

CATEGORY C

NOVICE

FOR ANY EXHIBITOR WHO HAS NOT WON A PRIZE IN THE FOOD AND COOKERY SECTION AT THE MILLMERRAN SHOW

Prize Money donated by Matt & Kassie Clark

- 39. Boiled Fruit Cake (round or square) **First \$10** **Second \$5**
- 40. Chocolate Cake (20cm round tin - iced on top only) - (Recipe below)
- 41. Plain Scones (4)

Chocolate Cake

1cup SR Flour	¼ cup Cocoa
1 cup Sugar	½ cup Milk
½ teasp Vanilla	125g Butter
2 Eggs	

Beat all ingredients together for 6 minutes. Bake in 20cm round tin at 180 degrees.

CATEGORY D

CONFECTIONARY

- 42. Coconut Ice (6 squares) **First \$10 Voucher** **Second \$5**
- 43. Marshmallow (6 squares) **First \$10 Voucher** **Second \$5**
- 44. Russian Caramels aka Caramel Fudge
(6 squares) (Recipe over page) **First \$10 Voucher** **Second \$5**

Russian Caramels

60g Butter
2 tbsp. Golden Syrup
2 teasp. Vanilla Essence

220g (1 cup) Sugar
395g. Sweetened Condensed Milk

Prepare a 20cm square cake pan by spraying it lightly with cooking oil and lining it with baking paper, running the paper up two sides so you can use it to lift the caramels out of the pan.

(NB It is recommended to use Canola Spray not Olive Oil, as it might taint the flavour.)

Spray a large saucepan with cooking oil, then add the butter, golden syrup, sugar and condensed milk. Bring to boiling point over a medium heat, stirring constantly with a wooden spoon. Turn the heat down to low and stir constantly. Continue to cook at a fast simmer for 10 - 15 minutes, or until a golden caramel colour.

Remove the caramel mixture from the heat and let it cool a little, then add the vanilla. Beat until thick and smooth.

Pour the caramel into the prepared pan and shake the pan gently from side to side to help the mixture settle out smoothly and evenly. Leave at room temperature to cool.

When cold, use a sharp knife to cut the caramel into squares, about 3cm across. Store the caramels in the fridge, in an airtight container, lined with a paper towel.

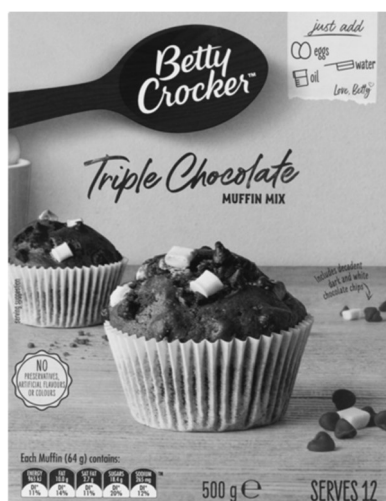


CATEGORY E

COOKERY FOR MEN

Prize Money donated by Pittsworth Sentinel

45. Chocolate Cake (20cm round tin - iced on top only)	First	\$10	Second	\$5
46. Boiled Fruit Cake (round or square)	First	\$10	Second	\$5
47. Muffins - (4) using a Packet Mix- packet to accompany entry	First	\$10	Second	\$5
48. Anzac Biscuits (4)	First	\$10	Second	\$5



COOKERY FOR SCHOOL CHILDREN

**NO ENTRIES TO BE REMOVED BY EXHIBITORS. PAVILION CLOSES 3.00PM SUNDAY 2 MARCH 2025.
EXHIBITS TO BE COLLECTED BETWEEN 4.00PM - 4.30PM SUNDAY.**

All Exhibits to be the bona fide work of the Exhibitor (open to all boys & girls)

CATEGORY F

ENTRY FREE

Prize Money: First \$5 Second \$3 Third \$2 unless otherwise stated.
Donated by Captains Mountain Wind Farm

- Trophy donated by Annie Muir for Champion Exhibit Category F Champion Ribbon
Donations towards Prize Money
 - \$10 Voucher donated by Kay McKinlay for First Prize Class 55 (Pikelets)
 - \$10 Voucher donated by Foodworks Millmerran for First Prize Class 56 (Scones)
 - \$10 Voucher donated by Kay McKinlay for First Prize Class 58 (Muffins)
 - \$10 Voucher donated by Desley Twidale for First Prize Class 60 (Chocolate Cake)

PREP & UNDER

49. 1 Decorated Biscuit (Girls)
50. 1 Decorated Biscuit (Boys)
51. Own choice - (3) either Biscuits, Slice, or Patty Cakes (iced)



7 YEARS & UNDER

52. 1 Decorated Muffin (Girls)
53. 1 Decorated Muffin (Boys)
54. Own Choice - (3) either Biscuits, Slice, or Patty Cakes (iced)

8 TO 13 YEARS

55. Pikelets (4) First \$10 Voucher Second \$3 Third \$2
56. Scones (4) First \$10 Voucher Second \$3 Third \$2
57. Anzac Biscuits (4)
58. Muffins (4) First \$10 Voucher Second \$3 Third \$2
59. Own Choice (3) - either Biscuits, Slice, or Patty Cakes (iced)
60. Chocolate Cake using Packet Mix (20cm round tin) - iced on top. Packet to accompany entry
First \$10 Voucher Second \$3 Third \$2

CATEGORY G

14 TO 17 YEARS

ENTRY FREE

Prize Money: First \$5 Second \$3 Third \$2 unless otherwise stated
Donated by Captains Mountain Wind Farm

- Trophy donated by David & Robbie Curtis for Champion Exhibit Category G
Champion Ribbon



Donations towards Prize Money

- \$10 Voucher donated by Fay Schwarten for First Prize Class 61 (Scones)
- \$10 Voucher donated by David & Robbie Curtis for First Prize Class 63 (Pikelets)
- \$10 Voucher donated by Judy Hedges for First Prize Class 66 (Chocolate Cake)

61. Scones (4) First \$10 Voucher Second \$3 Third \$2
62. Anzac Biscuits (4)
63. Pikelets (4) First \$10 Voucher Second \$3 Third \$2
64. Muffins - baked in tins (4)
65. Own Choice - (3) either Biscuits, Slice, Patty Cakes (iced)
66. Chocolate Cake using Packet Mix (20cm round tin) - iced on top. Packet to accompany entry
First \$10 Voucher Second \$3 Third \$2

SECTION - HANDICRAFT

Stewards: Lyn Haslam - 0448349199 Liz Charlton Julie Maher

Entries must be listed by 4.30pm Thursday 27 FEBRUARY 2025

Separate Entry Form for each Section (Not Class), please.

Exhibits can be brought in up to 9.30am Friday 28 February 2025

Pavilion open: Tuesday 12.30pm - 4.30pm Wednesday and Thursday 9.30am - 4.30pm..

Judging commences 10.00am Friday 28 February 2025

NO ENTRIES TO BE REMOVED BY EXHIBITORS. PAVILION CLOSES 3.00PM SUNDAY 2 MARCH 2025. EXHIBITS TO BE COLLECTED BETWEEN 4.00PM - 4.30PM SUNDAY.

All exhibits must be completed ready for use and clean. No pieces of work may be entered in more than one class. All exhibits to be the bona fide work of the exhibitor. ALL WORK MUST BE NEW AND COMPLETED SINCE LAST SHOW with the exception of articles previously entered in 'Handicraft Competition Section'. Work must not have been in use prior to showing

Entry Fee \$1 unless otherwise stated

Prize Money First \$5 Second \$3 Unless otherwise stated

Entry Fees include GST Prize Money does NOT include GST

**Kate Goodson Memorial Trophy for Most Successful Exhibitor donated by F & C Page
Trophy for One Woman's Exhibit donated by Matt & Kassie Clark
Trophy for Champion Handicraft (Softcraft) donated by Anthony's Dalby
Trophy for Champion Handicraft (Hardcraft) donated by Betty Caldicott
Trophy for First Prize Class 3 (Cushion) donated by Josie Peardon
Encouragement Award donated by Handicraft Stewards**

CLASS

- 1 Decorated Household Article (eg Photo Frame, Boxes, Flower Pot, etc)
- 2 Bead Work / Button Work
- 3 Cushion **First Prize Trophy** **Second Prize \$3**
- 4 Toy - knitted / crocheted
- 5 Toy - any other medium
- 6 Dressed Doll - *clothing only, judged*
- 7 Doorstop / Breeze Stop
- 8 Shopping Bag - any medium
- 9 Something New from Something Old - Story attached
- 10 Cream & Creative
- 11 Pink & Pretty
- 12 Blue & Beautiful
- 13 Black & White

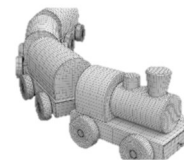


First Prize Money for Classes 14 - 17 donated by Liz Charlton

First \$10 Second \$3

- 14 Something for the Kitchen (eg Pot Mitt, Tablecloth, Place Mat, Apron, etc)
- 15 Something for the Bathroom (eg Washer, Towel, Toilet Bag, Mat, etc)
- 16 Something for the Craft Room (eg Pin Cushion, Needle/Scissor Keep, etc)
- 17 Something for the Nursery (eg Nappy Bag, Bib, Embroidered Singlet, Clothing for 2 yrs & U)
- 18 Novelty Article - Fun / Decorative
- 19 Novelty Article - Functional
- 20 Dress Hanger
- 21 Covered Book
- 22 Birthday Card
- 23 Christmas Card
- 24 Greeting / Celebration Card
- 25 Christmas Item





- 26 Woodwork - Fun or Decorative
27 Woodwork - Functional
28 Woodwork - by persons 17 yrs & under **Entry Free**
Prize Money Donated by Captains Mountain Wind Farm
- 29 Any Article not mentioned - Hardcraft
30 Any Article not mentioned - Softcraft
31 One Woman's Exhibit - 4 distinctly different articles of Needlework or Craft
First Trophy Second \$10
- 32 Any Handicraft done by persons 70 years & over. *If willing, persons age to be noted on entry.*
33 Any Handicraft by person 17 years & under **Entry Free**
Prize Money Donated by Captains Mountain Wind Farm
- 34 Adult Colouring - Pencil, Pen, Paint. Mounted
35 Scrapbooking - any Item
36 Paint by Number - any paint by number or sip and paint Item
[no more than 2 entries per person]. Entries to be no larger than 40x30cm
Prize Money for Classes 35/36 donated by Katrina & Bobby Sauverain
- 37 Jewellery Item - any Medium
- 38 **HANDICRAFT CHALLENGE**
- Garden Ornament any Medium (eg Recycled Wood, Horseshoes, Metal, Welding, etc)
First \$25 Second \$15 Third \$10
Donated by Lyn Haslam
- 39 Diamond Art - Framed 30cm x 30cm or smaller
40 Diamond Art - Framed larger than 30cm x 30cm
41 Paper Craft - (eg Origami, Quilling etc)

CHALLENGE



SECTION - HANDICRAFT JUNIOR

Stewards: Wendy Folker - 0429702164 Annette O'Sullivan - 0427148808

EXHIBITS MUST BE ENTERED AND RECEIVED by 4.30pm Thursday 27 FEBRUARY 2025
Separate Entry Form for each Section (Not Class), please.
Pavilion open: Tuesday 12.30pm - 4.30pm Wednesday and Thursday 9.30am - 4.30pm..

Judging commences 10.00am Friday 28 February 2025

NO ENTRIES TO BE REMOVED BY EXHIBITORS. PAVILION CLOSSES 3.00PM SUNDAY 2 MARCH 2025. EXHIBITS TO BE COLLECTED BETWEEN 4.00PM - 4.30PM.

Washed Articles allowed.

All Work must be Original and Entrants Own unaided Work.

<u>Entry Free</u>	<u>Prize Money</u>	First \$5	Second \$3	Third \$2
	Unless otherwise stated		Donated by Captains Mountain Wind Farm	

5 YEARS & UNDER

Trophy donated by Hair Expressions for Champion Exhibit **Champion Ribbon**

CLASS

- 1 Hand Puppet with creative designs - made with cut out felt and stuck onto a paddle pop stick.
Other than gluing, all work to be inspired and completed by Child
- 2 Collage with craft materials - to be created and stuck onto a A4 sheet (any design)
eg: gum nuts, material, scrunched paper
- 3 Happy Rock - 3 on a plate (for ideas check out Happy Rocks Millmerran Facebook page)
- 4 Beaded Bracelet
- 5 Playdough - something made from playdough [any design] eg craft materials, gum nuts, leaves etc

6 - 7 YEARS

Trophy donated by Revan & Wendy Folker for Champion Exhibit. **Champion Ribbon**

CLASS

- 6 Birthday Card - made with Craft Materials
- 7 A4 Colouring in - Hand drawn with Colouring Pencils, Crayons or Felt Pens
[display in clear plastic sleeve]
- 8 Colouring in on stencilled background page. A4 or smaller size [display in clear plastic sleeve]
- 9 Lego – original Lego creation **must be entered** on base board 38-40cm square
Theme of display to represent 'FARMING IN MILLMERRAN'
- 10 Necklace - own design made with beads
- 11 Happy Rock - 5 on a plate [for ideas check out Happy Rocks Millmerran Facebook page]

8 - 9 YEARS

Trophy donated by Graham & Annette O'Sullivan for Champion Exhibit **Champion Ribbon**

CLASS

- 12 Greeting Card - made with Craft Materials
- 13 A4 Colouring in - Hand drawn with colouring pencils, crayons, felt pens
Theme - 'SUNSET ON THE DOWNS' [display in clear plastic sleeve]
- 14 Colouring in on stencilled background page. A4 or smaller size [display in clear plastic sleeve]
- 15 Lego - original Lego creation **must be entered** on base board 38-40cm square
Theme of display to represent 'FARMING IN MILLMERRAN'
- 16 Necklace - own design made with beads
- 17 Design a Room - made with felt and craft materials, in a shoe box. Doll House furniture is acceptable but must fit in a shoe box **[Shoe Box size to be normal adult size]**
- 18 Happy Rock - 5 on a plate [for ideas check out Happy Rocks Millmerran Facebook page]

10 - 11 YEARS

Trophy donated by Scott and Rebecca Kirby for Champion Exhibit. Champion Ribbon

CLASS

- 19 Machine Sewn Drawstring Bag decorated on front of creation
Size 40cm long x 30cm wide
- 20 Greeting Card - made with Craft Materials
- 21 A4 Colouring in – hand drawn with colouring pencils, crayons or felt pens
Theme 'Sunset on the Downs' [display in a clear plastic sleeve]
- 22 Colouring in on stencilled background page, A4 size or smaller. [display in a clear plastic sleeve]
- 23 Lego - original Lego creation **must be entered** on base board 38-40cm square
Theme of display to represent 'FARMING IN MILLMERRAN'
- 24 Design a Room - made with felt and craft materials, in a show box. Doll House furniture is acceptable but must fit in a show box [**Shoe Box size to be normal adult size**]
- 25 Necklace - own design made with beads
- 26 Happy Rock - 5 on a plate [for ideas check out Happy Rocks Millmerran Facebook page]

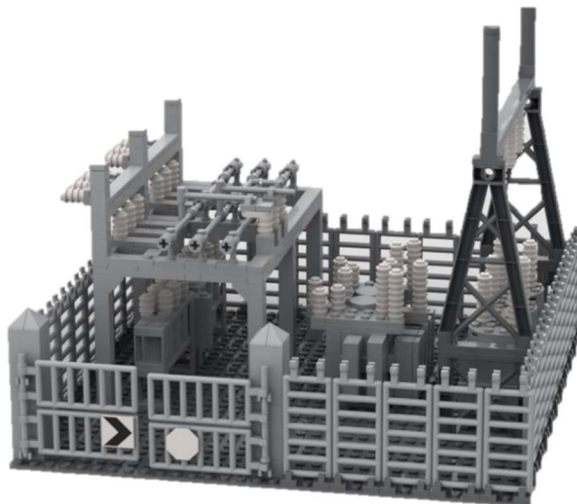
12 – 14 Years

Trophy donated by Cassie & Dean McKinlay & Family for Champion Exhibit

Champion Ribbon

CLASS

- 27 Sewn Item - created for casual wearing
- 28 Birthday Card - 3D image [must be raised up on the paper] using Craft Materials
- 29 Lego - original Lego creation **must be entered** on base board 38-40cm square - featuring a display of 'ENERGY'
- 30 Jewellery - Necklace and Earrings Set



SECTION - HANDICRAFT COMPETITION

Stewards: Lyn Haslam - 0448349199
Rita Perry - 0428954184 Liz Charlton



THIS SECTION IS NOW OPEN TO ORGANIZATIONS, GROUPS and INDIVIDUALS.

Intending Exhibitors please nominate early as there are only a certain number of Display Spaces

DISPLAY TO BE STAGED BY 10 00AM FRIDAY 28 FEBRUARY 2025 - Props allowed

TO BE JUDGED Friday 28 February 2025

NO ENTRIES TO BE REMOVED BY EXHIBITORS. PAVILION CLOSSES 3.00PM SUNDAY 2 MARCH 2025. EXHIBITS TO BE COLLECTED BETWEEN 4.00PM - 4.30PM SUNDAY

Entry Fees include GST

Prize Money does NOT include GST

Entry Fee **\$1**
Prize Money **First \$50.00 Second \$30.00 Third \$20.00**
Sashes awarded for First, Second and Third

Madge Folker Memorial Trophy for Champion Article in Section donated by Revan and Wendy Folker Champion Ribbon

Donations towards prize money:

- **Millmerran Arts and Crafts**
- **Millmerran Commerce & Progress Inc**
- **RFA Mechanical**

8 Different Items of Craft in each display

All Articles to be new each year.

Articles to be named.

Each Display to arrange backdrop of choice.

Overall Presentation will be judged first and points awarded thereafter.

Points: For each article (8 different items)	10 =	80
For display - use of Props recommended, to enhance Display		20
	TOTAL POINTS	100



SECTION - HORTICULTURE

Stewards Cheryl King - 0456820944
Desley Smith Melissa Holland Jan Gayner Margaret Arnold

ALL ENTRIES and EXHIBITS will be taken on FRIDAY morning 28 February 2025 between 7.30am - 9.30am. Separate Entry Form for each Section (Not Class), please.

Judging commences 10.00am Friday 28 February 2025

NO ENTRIES TO BE REMOVED BY EXHIBITORS. PAVILION CLOSES 3.00PM SUNDAY 2 MARCH 2025. EXHIBITS ARE TO BE COLLECTED BETWEEN 4.00PM - 4.30PM.

Entry Fees include GST Prize Money does NOT include GST
Entry Fee \$1 unless otherwise stated
Prize Money First \$5 Second \$3 unless otherwise stated

Trophy for Most Successful Exhibitor in Section donated by Foodworks Millmerran
Trophy for Champion Cut Flower donated by Millmerran Garden Club Champion Ribbon
Tim Thornton Memorial Trophy donated by Phil & Pam Thornton for Champion Rose
Champion Ribbon
Trophy for Champion Pot Plant donated by Desley Smith Champion Ribbon

DISTINCT DEFINITIONS - Distinct Species or Kinds: In the Cut Flower Sections, this indicates that only one representative of any genus may be included, ie one Rose, one Dahlia, one Delphinium etc.

In the Pot Plant section, Distinct Kinds would mean - one Adiantum, one Davallia, and one Polypodium etc.

DISTINCT VARIETIES - Means that flowers or plants of the same species may be used, i.e. in Roses - Peace, Virgo, etc.; Ferns - Adiantum, Nebulosum, and Gloria Moordrecht etc; and in Cut Flowers - Iceland Poppies, Shirley Poppies etc.

ALL ENTRIES SUBMITTED MUST BE ITEMS GROWN BY THE EXHIBITOR

FLOWERS

NB: BOTTLES ARE SUPPLIED FOR ALL EXHIBITS - DO NOT USE VASES OR GLASSES

CLASS

1. Rose 1 any colour
2. Roses 3 distinct
3. Rose 1 head of Polyanthus or Floribunda
4. Roses 3 - one variety in three stages bud to full bloom
5. Roses 3 Miniatures - 3 stems each a different colour
6. Rose 1 single Miniature
7. Rose 1 full head Miniature
8. Roses 3 stems - 3 colours Floribunda
- Champion Rose - selected from above classes.**
9. 1 Yellow Flower - other than a Rose (stem or head allowed)
10. 1 Red Flower - other than a Rose (stem or head allowed)
11. 1 Pink Flower - other than a Rose (stem or head allowed)
12. Geraniums 4 Zonal
13. Geraniums 4 Ivy
14. Collection of Geranium Foliage - 4 varieties
15. Creeper 1 Spike or Bloom
16. Bougainvillea specimen truss
17. Gerbera 1
18. Zinnias 6
19. Marigolds 1 bloom
20. Marigolds 3 blooms in 1 container
21. Flowering Shrubs 3 distinct to be named - in one container .
22. One Bulbous or Tuberous Flower - stem or head
23. Cut Flower 1 Only. Any other not named - stem, multiple head or bud allowed
24. Collection of Native Flowers - at least 4 different varieties in 1 container



POT PLANTS

NB: Pots not to exceed 19 cm high by 20 cm wide. Shallow pots to be no more than 12cm high by 30cm wide - inside measurements. **POTS MUST HAVE SAUCERS, NO TERRACOTTA POTS OR CERAMIC POTS ALLOWED UNLESS OTHERWISE STATED.**

ALL ENTRIES SUBMITTED MUST BE ITEMS GROWN BY THE EXHIBITOR FOR AT LEAST THREE MONTHS PRIOR TO THE SHOW

CLASS

25. Pot Plant variegated foliage
26. Pot Plant foliage - plain one colour only
27. Coleus Specimen
28. Begonia
29. Begonia Rex
30. Begonia in Flower
31. Pot Plant in bloom other than a Begonia
32. Maiden Hair fine
33. Maiden Hair medium
34. Maiden Hair coarse
35. Hares Foot Fern
36. Bonsai in Bonsai container; may be ceramic **NO more than 30cm square**
37. Specimen Fern fine
38. Specimen Fern medium
39. Specimen Fern coarse
40. Collection of at least 3 different Succulents and/or Cacti in 1 container
41. Bromeliad
42. Prettiest Pot Plant - in small unusual container, may be ceramic.
Pot and Plant judged and plant must be growing in the Pot.



JUNIOR SECTIONS

NB: Pots not to exceed 19 cm high by 20 cm wide. Shallow pots to be no more than 12cm high by 30cm wide - inside measurements. **POTS MUST HAVE SAUCERS, NO TERRACOTTA OR CERAMIC POTS ALLOWED.**

Entry Free

Prize Money First \$5 Second \$3 unless otherwise stated

Donated by Captains Mountain Wind Farm

12 Years and under

**Trophy donated by Missen Family for Champion Exhibit
Champion Ribbon**

CLASS

43. Succulent in a Stiletto
44. Decorated Air Plant display, on Wood [wood to be no more than 30cm square]
45. Cactus in a Terrarium

13 - 17 Years

**Trophy donated by Cheryl King for Champion Exhibit
Champion Ribbon**

46. Succulent in a Stiletto
47. Decorated Air Plant display, on Wood [wood to be no more than 30cm square]
48. Cactus in a Terrarium



SECTION - NEEDLEWORK

Stewards: Raelene Antonio 0427371717 Margaret Bennett 46952295
Christine Vietheer Rose Callagher

Entries must be listed by 4.30pm Thursday 27 FEBRUARY 2025.
Separate Entry Form for each Section (Not Class), please.
Exhibits can be brought in up to 9.30am Friday 28 February 2025
Pavilion open: Tuesday 12.30pm - 4.30pm Wednesday and Thursday 9.30am - 4.30pm..

Judging commences 10.00am Friday 28 February 2025

NO ENTRIES TO BE REMOVED BY EXHIBITORS. PAVILION CLOSSES 3.00PM SUNDAY 2 MARCH 2025. EXHIBITS CAN BE COLLECTED BETWEEN 4.00PM - 4.30PM

All exhibits must be completed ready for use and clean. No pieces of work may be entered in more than one class. All exhibits to be the bona fide work of the exhibitor.

All work must be new and completed since last show with the exception of articles previously entered in the 'Handicraft Competition' Section. Work must not have been in use prior to showing.

All class tickets to be attached with strong safety pins.

Entry Fees include GST Prize Money does NOT include GST

Entry Fee \$1 unless otherwise stated
Prize Money First \$5 Second \$3 unless otherwise stated

Alice Thomson Memorial Trophy for Most Successful Exhibitor in Section donated by Len Thomson.

Trophy for Impact Article in Section donated by Raelene Antonio

Trophy for Challenge for Over 80's donated by Rita Perry

Encouragement Award donated by Lois Lindenmayer

CLASS

45 CHALLENGE

Challenge for Over 80's
Any article in Section by anyone 80yrs & over



NEEDLEWORK

Champion Trophy donated by Wednesday Morning Craft

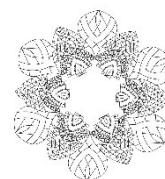
Champion Ribbon

Voucher for Champion Cross Stitch (Classes 52 - 54) donated by

Roy & Maryann Flynn

Champion Ribbon

- 46 Any article hand embroidered with Cotton or Silk
- 47 Any article hand embroidered with Wool
- 48 Candlewick Article
- 49 Canvas Work
- 50 Long Stitch - Framed
- 51 Article in Hand Patchwork [eg Paper Pieced]
- 52 Counted Cross Stitch - Framed Small - Maximum size 26 x 31 cms (10 x 12 ins)
- 53 Counted Cross Stitch - Framed Large - Maximum size 51 x 76 cms (20 x 30 ins)
- 54 Counted Cross Stitch - Unframed (table runner etc)
- 55 Article in hand Appliqué
- 56 Gingham Article (chicken scratching etc)
- 57 Counted Thread Embroidery Unframed (Hardanger etc)
- 58 Zenbroidery
- 59 Decorated Towel - NOT Machine Embroidered
- 60 Sashiko Article
- 61 Ribbon Embroidery Article
- 62 Article with Thread Darning
- 63 Any other needlework - not specified
- 64 Any Needlework done by persons 70 years of age & over. *If willing, persons age to be noted on entry.*



KNITTING **Champion Trophy donated by Margaret Bennett**
Champion Ribbon

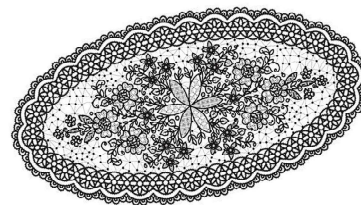


- 65 Child or Adult Jumper / Cardigan
- 66 Beanie / Hat / Scarf / Cape
- 67 Knee Rug / Bunny Rug
- 68 Any other Knitted Garment or Article (not already mentioned)
- 69 Any Knitting Work done by persons 70 years of age & over.
If willing, persons age to be noted on entry

CROCHET **Champion Trophy donated by Millmerran Arts and Crafts** **Champion Ribbon**
Iris Funk Memorial Trophy for Most Points donated by
Janelle Caldicott and Sharon Grey

Work Not to be mounted

- 70 Two Doilies - distinctly different patterns (under 30 cm)
- 71 Table Centre 30 cm & over - using 20 or Finer Thread
- 72 Table Centre 30 cm & over - using 10 or Heavier Thread
- 73 Table Cloth or Runner
- 74 Amigurumi Crochet
- 75 Coloured Knee Rug - no more than 120cm square
- 76 One Handkerchief Edge and/or Corner
- 77 Any other Crochet Article/Garment (not already mentioned)
- 78 Any Crochet work done by persons 70 years of age & over.
If willing, persons age to be noted on entry.



MACHINE SEWING **Champion Trophy donated by Lyn Haslam**
Champion Ribbon

- 79 Childs Garment
- 80 Patchwork Runner, machine quilted
- 81 Machine Appliqué
- 82 Machine Patchwork (hand quilting allowed)
- 83 Machine Embroidery (eg Towels)
- 84 Any Item Embellished (eg Semiole)
- 85 Bag Stand alone, structured base
- 86 Bag (eg. Tote, Craft, Decorative, Patchwork)
- 87 Article incorporating Chenille Work
- 88 3 different articles using the same material
- 89 1 - 3 items using different techniques of applique [eg Shadow , Needleturn, Scrappy]
- 90 Item depicting 'Sunset on the Downs'
- 91 Any other Machine Sewn Article or Garment [not already mentioned]
- 92 Cushion - Entrant 17 years & under **Entry Free**
- 93 Any other Item by Entrant 17 years and under **Entry Free**



Prize Money for Classes 92/93 donated by Captains Mountain Wind Farm

UFO (must be half or more finished - one Item per Entrant per Class)

Prize Money donated by Edna Muir

- 94 UFO - Crochet or Knitting
- 95 UFO - Sewing



SECTION - PHOTOGRAPHY

Chief Steward: Karen Dieckmann - 0447543149
Stewards: Jeanette Krinke Kay Dieckmann

**ENTRIES MUST be LISTED and RECEIVED by 4.30pm Thursday 27 February 2025
NO ENTRIES WILL BE ACCEPTED ON FRIDAY MORNING.
Separate Entry Form for each Section (Not Class), please.**

Pavilion open: Tuesday 12.30pm - 4.30pm Wednesday and Thursday 9.30am - 4.30pm..

Judging commences 9.00am Friday 28 February 2025

**NO ENTRIES TO BE REMOVED BY EXHIBITORS. PAVILION CLOSSES 3.00PM SUNDAY
2 MARCH 2025. EXHIBITS TO BE COLLECTED BETWEEN 4.00PM - 4.30PM.**

Entry Fee: \$1 unless otherwise stated
Prize Money: First \$5 Second \$3 Third \$2 unless otherwise stated

Entry Fees include GST Prize Money does NOT include GST

Photos to be commercially snapshot size. 15 cms x 10 cms, (6" x 4") and mounted on black or white cardboard with a border of 1.5cm, unless otherwise stated

Stewards will place photos onto photo boards for display.

NB: PLEASE HAVE VELCRO IN ALL 4 CORNERS ON BACK OF CARDBOARD/PHOTO

ALL ENTRIES TO HAVE NAME OF EXHIBITOR ON TOP OF BACK - either written in pencil, or onto self-adhesive label. (This is to avoid damage to Photo by use of biro/ink)

Same image can only be used in ONE class.

Photos should NOT have dates printed on face.

Points Judges look for are: Sharpness, Lighting, Composition, Cropping and Exposure.

Trophies: CHAMPION COLOUR PHOTO donated by Len Thomson Champion Ribbon
CHAMPION PHOTO CLASSES 11&12 [Sunrise/Sunset]
Kellie Curtis Memorial Trophy donated by Paul Curtis Champion Ribbon

**MOST SUCCESSFUL EXHIBITOR donated by Loo La Belles
ENCOURAGEMENT AWARD donated by Brazil Farming Pty Ltd
STEWARDS CHOICE AWARD donated by Bill Smith Pacific Seeds**

CLASS

- 1 Colour Photo Landscape without Water.
- 2 Colour Photo Landscape with Water, or, Seascape
- 3 Colour Photo Farming/Animals Prize Money donated by Brazil Farming Pty Ltd
- 4 Colour Photo Farming/Cropping Prize Money donated by Brazil Farming Pty Ltd
- 5 Colour Photo My Favourite Pet
- 6 Colour Photo Animals in the Wild
- 7 Colour Photo Bird Study
- 8 Colour Photo Study of Person/People [eg Child/Children, Adult/Adults]
- 9 Colour Photo Drone Photo - Any Subject
- 10 Colour Photo Flower
- 11 Colour Photo Sunrise
- 12 Colour Photo Sunset
- 13 Colour Photo Buildings (I or Several) [eg Historic, Highrise, Modern]
- 14 Colour Photo Aspect of Weather [eg Fire, Flood, Cloud etc]
- 15 Colour Photo Transport of any kind [Farm, Industry, Personal, Vintage Vehicles]
- 16 Colour Photo Sport - Action
- 17 Colour Photo Any other subject
- 18 Colour Photo My Favourite Holiday /Travel Destination
First Second Third Prizes donated by Bronte Harris

**CHAMPION COLOUR PHOTO CLASSES 11/12 (SUNRISE/SUNSET)
OVERALL CHAMPION COLOUR PHOTO Classes 1 - 18**

- 19 **Black and White or Sepia** People (1 or more)
 20 **Black and White or Sepia** Any other subject
First Second Third Prizes donated by Westridge Photos

ENLARGEMENTS

Classes 21 - 25 to be Mounted on Cardboard with a 1.5cm Border around Photo
 Cardboard Mounts not to exceed 50cms in any direction

PRIZE MONEY FOR CLASSES 21 - 23 donated by BRAZIL FARMING PTY LTD

- | | | | | |
|----|---------------------------|-------------------------|-------------------|--------------------|
| 21 | Colour Enlargement | Landscape | First \$20 | Second \$10 |
| 22 | Colour Enlargement | Landscape - Agriculture | First \$20 | Second \$10 |
| 23 | Colour Enlargement | People (1 or more) | First \$20 | Second \$10 |

PRIZE MONEY FOR CLASSES 24 & 25 donated by THE BROOKSTEAD STORE & POST OFFICE

- | | | | | |
|----|------------------------------|-------------------|---------------------------|----------------------------|
| 24 | Colour Enlargement | Any other subject | First \$20 Voucher | Second \$10 Voucher |
| 25 | B & W Enlargement | Any subject | First \$20 Voucher | Second \$10 Voucher |

INTENDING EXHIBITORS ARE ABLE TO HAVE THEIR PHOTOS PRINTED AT:

- **Westridge Photos**, Shop 6, 300 West St., Kearney Springs
 Ph: 46363186 westfuji@westridgephotos.com.au



PHOTOGRAPHY - JUNIOR

Chief Steward: Karen Dieckmann - 0447543149
Stewards: Maree Elsden Leanne Dieckmann

COMPETITORS IN THIS SECTION MUST BE 17 YEARS OF AGE & UNDER AS AT
1 MARCH 2025

NB:

PLEASE REFER TO TOP OF SENIOR SECTION FOR NECESSARY REQUIREMENTS.

Photos to be commercially snapshot size. **15 cms x 10 cms, (6"x 4")** and mounted on black or white cardboard with a border of 1.5cm, unless otherwise stated

Stewards will place photos onto photo boards for display.

NB: PLEASE HAVE VELCRO ON BACK OF CARDBOARD/PHOTO

ENTRY FREE

Prize Money: Donated by Captains Mountain Wind Farm
First \$5 Second \$3 Third \$2 Unless otherwise stated

Trophies: CHAMPION COLOUR PHOTO donated by Yondale Designs
MOST SUCCESSFUL EXHIBITOR donated by Nancy Hegarty
ENCOURAGEMENT AWARD donated by Frank & Clymene Page
STEWARDS CHOICE AWARD donated by Bill Smith Pacific Seeds

CLASS

- J 1 **Colour Photo** Landscape without Water
- J 2 **Colour Photo** Landscape with Water, or Seascape
- J 3 **Colour Photo** Study of Person/People [eg Child/Children, Adult/Adults]
- J 4 **Colour Photo** Farming - Animals
- J 5 **Colour Photo** Farming - Cropping
- J 6 **Colour Photo** My Favourite Pet
- J 7 **Colour Photo** Animals in the Wild
- J 8 **Colour Photo** Flower
- J 9 **Colour Photo** Bird Study
- J10 **Colour Photo** Machinery of any kind
- J11 **Colour Photo** Sunrise/Sunset
- J12 **Colour Photo** Buildings [1 or several]
- J13 **Colour Photo** Aspect of Weather [Not Sunrise/Sunset]
- J14 **Colour Photo** Sport Action
- J15 **Colour Photo** Drone Photo - Any Subject
- J16 **Colour Photo** Any other Subject
- J17 **Colour Photo** NOVICE - Any Subject.



Only for Exhibitors who have **NOT** won a prize at a previous Millmerran Show

CHAMPION COLOUR PHOTO FROM CLASSES J1 - J17

J18 **Black and White** Photo - Any Subject

ENLARGEMENTS -

Classes J19 & J20 to be Mounted on Cardboard with a 1.5cm Border around Photo
Cardboard Mounts not to exceed 50cms in any direction

PRIZE MONEY FOR CLASSES J19 & J20 donated by BRAZIL FARMING PTY LTD

J19	Colour Enlargement - Any Subject	FIRST \$20	SECOND \$10
J20	Black and White Enlargement - Any Subject	FIRST \$20	SECOND \$10

INTENDING EXHIBITORS ARE ABLE TO HAVE THEIR PHOTOS PRINTED AT:

- **Westridge Photos**, Shop 6, 300 West St., Kearney Springs
Ph: 46363186 westfuji@westridgephotos.com.au

SECTION - QUILTS & WALL HANGINGS

Steward: Lois Lindenmayer - 0409983003

**NB: Entries to be listed and delivered to Pavilion by 4.30pm Thursday 27 February 2025
Any entries brought in on Friday morning will not be accepted.
Separate Entry Form for each Section (Not Class), please.
Pavilion open: Tuesday 12.30pm - 4.30pm Wednesday and Thursday 9.30am - 4.30pm..**

**NO ENTRIES TO BE REMOVED BY EXHIBITORS. PAVILION CLOSSES 3.00PM
SUNDAY 2 MARCH 2025. EXHIBITS TO BE COLLECTED BETWEEN 4.00PM - 4.30PM.**

JUDGING COMMENCES 8.30 AM FRIDAY 28 FEBRUARY 2025

Entry Fees include GST

Prize Money does NOT include GST

Entry Fee all Classes

\$1 unless otherwise stated

Prize Money

First \$10 Second \$8 unless otherwise stated

Trophy donated by Katrina & Bobbie Sauverain for Champion Quilt

Trophy donated by Millmerran Quilters Group for Reserve Champion Quilt

Trophy donated by Helen Antonio for Champion Non Professional Quilt (Classes 1,3, & 5)

Encouragement Award donated by Millmerran Quilters Group

Articles:

- Must **not have been previously entered**
- Must **NOT be more than 2 years old**
- Must have a minimum of a 3" rod pocket (for all quilt items) or will not be entered
- Must be in a clean condition - old and soiled Exhibits will not be accepted
- Must be competitors own work unless otherwise stated
- Must have all threads and fluff removed
- Must NOT have been washed

CLASS

1. Pieced Quilt - non professional
2. Pieced Quilt - commercially quilted
3. Appliqued Quilt - non professional
4. Appliqued Quilt - commercially quilted
5. Pieced/Appliqued Wall Hanging - non professional - Theme: 'Sunset on the Downs'
6. Hand Embroidered Quilt
7. Machine Embroidered Quilt
8. Pre cut Quilt (eg jelly roll)
9. Small Quilt 45"x 60", or less
10. Art Quilts/textile Art
11. Novice - Exhibitor must have been quilting for less than 2 years and not have won a prize in the Quilting Section of any previous Millmerran Show

CHAMPION QUILT ELIGIBLE TO COMPETE AT STATE FINALS BRISBANE

Quilting

Happiness

SECTION - SCHOOL WORK

Steward: Nicole Farrington - 0458083783

ALL PRIZE MONEY & ENTRIES WILL BE HANDED OUT AT SCHOOL AFTER SHOW

ALL SCHOOLWORK CLASSES (PRIMARY & SECONDARY) TO BE AVAILABLE FOR COLLECTION BY 3.00 PM ON TUESDAY 25 FEBRUARY 2025

TO BE JUDGED WEDNESDAY 26 FEBRUARY 2025

**Entry Free Prize Money First \$5 Second \$3 Third \$2 unless otherwise stated
Donated by Captains Mountain Wind Farm**

All work to have been done since the 2024 Millmerran Show. Certification by competitor and teacher or parent that work is competitor's own unaided work.

**Name of Exhibitor, School and Show Class Number to be on the back of entries [as below]
Please check class numbers carefully to ensure that the child enters in his/her correct
Year level, especially in composite classes.
If Exhibitor has no media permission, please add a RED DOT.**

Students Name:

School:

Show Class:

If Student has **no media permission**, please add a **RED DOT**



PRIMARY

**Trophy donated by Millmerran Show Society - Castles Family Memorial Trophy for
Champion Work Years 5 & 6 Champion Ribbon**

**Trophy donated by Beverley and Robert Mackenzie for Champion Work Years 3 & 4
Champion Ribbon**

**Trophy donated by Pittsworth Sentinel for Champion Work Years 1 & 2
Champion Ribbon**

Entries in the Primary School Work Section may be kept from March 2024 onwards (i.e. after the 2024 Show) and entered in the 2025 Show. Students will be entered into the Class for the year level in which they are enrolled in 2025, regardless of when the work was completed.

By arrangement with the Licensor, The Estate of Dorothea Mackellar, c/- Curtis Brown (Aust) Pty Ltd the Handwriting Section will be taken from excerpts of Dorothea Mackellar's, ' My Country '

DISPLAY Handwriting Prep Schools to submit size A3 display containing School Name and Logo with Children's Name and name of their chosen Animal to be handwritten by them.
NOT to be judged

CLASS

- | | | | |
|---|--------------------|---------------|----------------------------------------------------------------------------------------------------------------------------------------------------------------------------------------------|
| 1 | Handwriting | Year 1 | I love a sunburnt country, a land of sweeping plains.
To be on year 1 writing paper [red and blue lines]
To be mounted on a <u>green</u> paper background half A4 size |
| 2 | Handwriting | Year 2 | I love a sunburnt country, a land of sweeping plains.
To be on year 2 writing paper [red and blue lines]
To be mounted on a <u>red</u> paper background half A4 size. |

3 **Handwriting** **Year 3** below verse
*To be on year 3 writing paper [red and blue lines]
Size A4 paper inserted in clear plastic sleeve*

4 **Handwriting** **Year 4** below verse
*To be on year 4 writing paper red and blue lines]
Size A4 paper inserted in clear plastic sleeve*

**I love a sunburnt country,
A land of sweeping plains,
Of ragged mountain ranges,
Of droughts and flooding rains.
I love her far horizons,
I love her jewel-sea,
Her beauty and her terror-
The wide brown land for me!**

- Dorothea Mackellar

5 **Handwriting** **Year 5** below 2 verses
*To be on year 5 writing paper [blue lines]
Size A4 paper inserted in clear plastic sleeve*

6 **Handwriting** **Year 6** below 2 verses
*To be on year 6 writing paper [blue lines]
Size A4 paper inserted in clear plastic sleeve*

**The love of field and coppice,
Of green and shaded lanes.
Of ordered woods and gardens
Is running in your veins,
Strong love of grey-blue distance
Brown streams and soft dim skies
I know but cannot share it,
My love is otherwise.**

**I love a sunburnt country,
A land of sweeping plains,
Of ragged mountain ranges,
Of droughts and flooding rains.
I love her far horizons,
I love her jewel-sea,
Her beauty and her terror -
The wide brown land for me!**

- Dorothea Mackellar



ART WORK

NB: * All work to be submitted in A4 clear plastic sleeves *****

CLASS

7	Art	Kindergarten / Early Childhood		Collage
8	Art	Prep	any medium	Patterns
9	Art	Year 1	any medium	Garden
10	Art	Year 2	any medium	Clowns
11	Art	Year 3	any medium	Superheroes
12	Art	Year 4	any medium	Sunrise / Sunset
13	Art	Year 5	any medium	Millmerran Show
14	Art	Year 6	any medium	Landscape

Encouragement Awards will be given by Millmerran Arts & Crafts for Art Work Years 1 - 6

ALL PRIZE MONEY & ENTRIES WILL BE HANDED OUT AT SCHOOL AFTER SHOW



SECONDARY

ALL SCHOOLWORK CLASSES (PRIMARY & SECONDARY) TO BE AVAILABLE FOR COLLECTION BY 3.00 PM ON TUESDAY 25 FEBRUARY 2025

TO BE JUDGED WEDNESDAY 26 FEBRUARY 2025

**Entry Free Prize Money First \$5 Second \$3 Third \$2 unless otherwise stated
Donated by Captains Mountain Wind Farm**

All work to have been done since the 2024 Millmerran Show. Certification by competitor and teacher or parent that work is competitor's own unaided work.

**Name of Exhibitor, School and Show Class Number to be on the back of entries [as below]
Please check class numbers carefully to ensure that the child enters in his/her correct
Year level, especially in composite classes.
If Exhibitor has no media permission, please add a RED DOT.**

Students Name:

School:

Show Class:

If Student has **no media permission**, please add a **RED DOT**



**Entry Free First \$5 Second \$3 Third \$2 unless otherwise stated
Prize Money Donated by Captains Mountain Windfarm**

**Trophy donated by Paul & Nicole Farrington for First Prize Class 15 Champion Ribbon
Trophy donated by Pittsworth Sentinel for Champion Exhibit Classes 16 & 17 Champion Ribbon**

Entries in the Secondary School Work Section may be kept from March 2024 onwards [i.e. after the 2024 Show] and entered in the 2025 Show. Students will be entered into the Class for the year level in which they are enrolled in 2025, regardless of when the work was completed.

*****NB: Work NOT to be mounted as it is too difficult to display.*****

CLASS

15	Advertisement	Year 7	Poster promoting the 89th Millmerran Show 28 February & 1 March 2026 <i>[NB: entire Show not just the Rodeo]</i> <i>A4 Size - Colourful</i> <i>Computer generated, inserted in clear plastic sleeve.</i> <u><i>Winning Poster to be used for 2026 Show Promotion & inserted in Millmerran Newsletter</i></u> First Trophy Second \$3 Third \$2
16	Creative Writing	Year 7 & 8	Computer generated - Subject: ' Sunset on the Downs ' must be titled. Max 250 words Font size 14 Times New Roman style Size A4 paper inserted in clear plastic sleeve
17	Creative Writing	Year 9 & 10	Computer generated - Subject: ' Sunset on the Downs ' Must be titled. Max 250 words Font size 14. Times New Roman style Size A4 paper inserted in clear plastic sleeve

PRODUCE PAVILION **SECTIONS**

****** Trophy - Donated by Amelia & Jim Stower
Awarded to Exhibitor gaining highest points in
Produce Pavilion***



SECTION - FARM PRODUCE

Steward: Rebecca Kirby - 0427952336 / 0447955177

FIELD COMPETITIONS-

Wheat, Barley, Chickpea and Sorghum

Heavy and Light Soil Competition in Wheat, Barley and Sorghum

Stewards shall use their discretion in the composition of crops that are eligible in field competitions on a seasonal basis. Stewards and judges may alter or restrict the number of entries per section per farm in the field competitions on a season- to-season basis (due to time restraints)

All entries are to be a minimum of 10ha with a headland included.

Field Crop Entry Fees \$10.00 (incl GST)

MUST BE PAID PRIOR TO JUDGING

ALL OTHER ENTRIES close 9.30am Friday 28 February 2025

and will be judged Friday 28 February 2025

All entries are to be grown by the exhibitor and current season produce. Grain exhibits to be named on containers with variety and the owner to ensure identification.

All grain is to be free of insects.

Any samples containing insects will be disqualified.

Trophies will be presented in the Produce Pavilion at 1.00pm on Sunday 2 March 2025

Grain to be judged on the following scale of points: -

Colour 15 Sample 15

Grain Size 15 Purity 15

Weight - 1 point for every kg / Hectolitre

Protein Content for wheat (10 points plus 1.5 points per % above 10% protein)

Entry Fees include GST

Prize Money does NOT include GST

Entry Fee \$1

First Prize \$5 Second \$3 Third \$2

Unless otherwise stated

Sincere thanks to the following Sponsors:

Pacific Seeds

Champion Seeds

Ray White Rural

Pursehouse Rural

Vary's Agricultural Services

IOR Rural

Pioneer Seeds

DA Hall & Co

Sizeco

L. Pfeffer

Haical Hydraulic

PERPETUAL SHIELDS

Field Wheat Competition overall Champion

**Lyndon Pfeffer Memorial Perpetual Shield
donated by Pfeffer Family**

Field Sorghum Competition Champion

**Nerida Hegarty Memorial Perpetual Shield
donated by Hegarty Family**

Most successful Exhibitor Classes 1 - 24

**Jim Twidale Perpetual Shield donated by
Pacific Seeds**

Champion Sheaf of Sorghum

Perpetual Shield donated by Pacific Seeds

Trophies will be awarded for:

Field Wheat Competition

Field Barley Competition

Field Chickpea Competition

Most successful Exhibitor in Small Seeds

Champion Samples of Wheat

Champion Samples of Barley

Champion Samples of Sorghum

Overall Champion Exhibit

SAMPLES of wheat and barley are to be **delivered to Millmerran Rural** by **Monday 24 February 2025** or by arrangement with the Steward.

Samples will be tested for protein, screenings and weight etc. All samples are to be free of insects. Any samples with insects will be disqualified.

<p>WHEAT - 4 KG</p> <ol style="list-style-type: none"> 1. Any hard variety to be named 2. Any soft variety to be named 3. Any Durum variety to be named <p>Prizes for Samples 1 st, 2 nd, 3 rd</p>	<p>SEEDS - 4 KG</p> <p>ALL TO BE NAMED</p> <ol style="list-style-type: none"> 8. Maize 9. Oats 10. Any Winter Legume 11. Any summer Legume 12. Bird Seeds 13. Any other Seeds 14. Hybrid Sorghum <p>Prizes for Sorghum Samples 1 st, 2 nd, 3 rd</p>
<p>BARLEY - 4 KG</p> <ol style="list-style-type: none"> 4. Any malt variety to be named 5. Any feed variety to be named <p>Prizes for Samples 1 st, 2 nd, 3 rd</p>	<p>SHEAVES</p> <p>10 cm in diameter unless specified</p> <ol style="list-style-type: none"> 15. Winter Cereals 16. Summer Small Seeds 17. Forage Sorghum 18. Collection of useful Grasses - Millmerran District 19. Maize for Silage 20. Maize - 6 Cobs 21. Sunflower - 3 Heads 22. Cotton - 4 Plants tied 23. Any other Sheaves 24. Hybrid Sorghum - 10 Heads tied <p>Prizes for Sorghum Sheaves 1 st, 2 nd, 3 rd</p>
<p>OIL SEEDS - 4 KG</p> <ol style="list-style-type: none"> 6. Any winter crop oilseed 7. Any summer crop oilseed 	



SECTION - FRUIT & VEGETABLES

Stewards: Dean Grundon - 0429496129
Assistant Stewards: Paula McKinlay

Charlie Batzloff - Ph 46954129
Rose Twidale Jim Cooper

ALL ENTRIES and EXHIBITS will be taken on FRIDAY MORNING 28 FEBRUARY 2025 between 7.30am - 10.00am.

Separate Entry Form for each Section (Not Class), please.

JUDGING COMMENCES 11.30AM FRIDAY 28 FEBRUARY 2025

Exhibits of Fruit and Vegetables must be grown by Exhibitor.
ALL PRODUCE MAY BE CUT AT JUDGES DISCRETION.

NO ENTRIES TO BE REMOVED BY EXHIBITORS. THE STEWARDS WILL GIVE ALL ENTRIES TO THE EXHIBITOR AFTER 3.30PM AND BEFORE 4.00PM SUNDAY 2 MARCH 2025

Entry Fees include GST Prize Money does NOT include GST

Entry Fee \$1
Prize Money First \$5 Second \$3 Except where otherwise stated.

Trophy for Champion Exhibit donated by Cann's Mini Excavator Service

Champion Ribbon

Trophy for Champion Plate of Tomatoes donated by Val Grundon

Champion Ribbon

Trophy for Champion Pumpkin donated by Millmerran Rural

Champion Ribbon

Trophy for Collection of Fruit donated by Doug & Rose Twidale

Trophy for Collection of Vegetables donated by Nola Wade

Trophy for Most Successful Exhibitor donated by SRG Fencing

Encouragement Award donated by Mitre 10 Millmerran

JUNIOR SECTION - 17 YEARS & UNDER

Peter Winter Memorial Trophy for Champion Exhibit donated by Justin Winter

Champion Ribbon

Trophy for Most Successful Exhibitor donated by Frank Page

Encouragement Award donated by Charlie Batzloff

Trophies will be presented in the Produce Pavilion after the official welcome on Sunday

Rules as stated above.

ENTRY FREE

Prize Money: First \$5 Second \$3 Except where otherwise stated

Donated by Captains Mountain Wind Farm

Tips for entering produce in Show

- **Presentation plays a big part in competition**
- Wipe exhibits clean. A polish with a soft cloth helps improve appearance of melons, pumpkins etc
- Try to pick exhibits without any skin blemishes
- Where an entry requires more than one piece of fruit/vegetable keep all pieces to a similar size and shape. It is better to have two smaller even sized and coloured specimens than two uneven large ones.
- Shallot roots can be trimmed neatly to improve appearance. Rhubarb leaves maybe trimmed if wished. Both can be tied together with string or rubber band to help stand neatly in their bottles of water.
- Sweet corn should have the husk left on for judging.
- Pumpkins/squash look best with a trimmed short stalk/stem of approx. 3-5 cms.
- Stewards are happy to answer any of your questions prior to the show.

CLASS

FRUIT

1. Figs - 3
2. Grapes - table - plate/bunch
3. Lemons - 3
4. Limes - 3
5. Mangoes - 2
6. Melon - rock melon any variety
7. Melon - watermelon - long
8. Melon - watermelon - round
9. Melon - pie
10. Melon - heaviest any variety
11. Nuts - peanut in shell - 10
12. Nuts any other variety - 10
13. Olives - any variety - 10
14. Passion fruit - 3
15. Pears - 3
16. Rosellas 10 pods
17. AOV not listed - any number
18. Collection fruit - not less than three varieties

Prize Money 1st \$7 2nd \$5

VEGETABLES

19. Asian vegetable exhibit
20. Beans - butter - 8 pods
21. Beans - dwarf - 8 Pods
22. Beans - snake - 8 pods
23. Beans any variety not listed - 8 pods
24. Beetroot - 3 - tops on
25. Capsicum - any variety - 2
26. Carrots - 3 - tops on
27. Chillies any variety - 3
28. Cucumbers any variety - 2
29. Egg Plant any variety - 2
30. Garlic - any variety - 2
31. Onions any colour - 3
32. Pumpkin - Butternut
33. Pumpkin - Crown Prince
34. Pumpkin - Golden Nugget
35. Pumpkin - Gramma Bugle
36. Pumpkin - Jarrahdale
37. Pumpkin - Kent (Jap)
38. Pumpkin - Qld. Blue - max 30cm width
39. Pumpkin - Table- any variety not listed
40. Pumpkin - heaviest table
41. Pumpkin - heaviest other than table pumpkin

Prize Money donated by

Dean Grundon

1st \$50 2nd \$30 3rd \$10

42. Pumpkin - collection - 3 distinct varieties
Prize Money 1st \$7 2nd \$5
43. Rhubarb - bunch in water
44. Shallots - bunch of 6 in water
45. Silverbeet - bunch in water

46. Squash - button - 3
47. Squash - collection - 3 varieties
48. Sweet corn - husk on - 2 cobs
49. Sweet potato - 2
50. Tomato - egg any colour - 3
51. Tomato - red - 3
52. Tomato - yellow - 3
53. Tomato - cherry - 6 any colour
54. Tomato - miniature any colour - 6 (eg tear drop / mini roma)
55. Tomato any variety not listed - 3
56. Zucchini - max. length 20cm - 2
57. AOV not listed - any number
58. Collection vegetables -

**not less than four varieties
Prize Money 1st \$7 2nd \$5**

59. Culinary herbs - **collection, in water**
60. My Herb Garden -collection of herbs grown in container of choice (eg pot, foam box, wheelbarrow)

**Prize Money donated by
Dean Grundon**

1st \$30 2nd \$20 3rd \$10

61. Eggs - carton 12 (eg Hen, Bantam, Duck)
NOT MIXED
62. Honey - 500g container



JUNIOR SECTION - 17YRS & UNDER

63. Melon - rock melon
64. Melon - watermelon
65. Peanuts in shell - 4
66. Fruit - any other variety not listed
67. Collection of fruit - not less than 3 varieties

Prize Money 1st \$7 2nd \$5

68. Beans any variety - 6
69. Cucumber - any variety - 1
70. Pumpkin - Qld. blue
71. Pumpkin - Table any variety not listed
72. Pumpkin - heaviest
73. Radish - 3
74. Tomato - cherry - 3
75. Tomato - miniature - 6 (eg tear drop / Mini roma)
76. Zucchini - 1
77. Vegetable - any variety not listed
78. Collection vegetables - not less than 3 varieties

Prize Money 1st \$7 2nd \$5

79. Eggs- half carton 6 (eg Hen, Bantam, Duck)
NOT MIXED



SECTION - WOOL

Stewards: K. Nielsen 0417639943 E. Nielsen

ALL ENTRIES TO BE AT WOOL PAVILION BY 9.00AM SATURDAY 1 MARCH 2025
JUDGING WILL COMMENCE AT 9.30AM SATURDAY 1 MARCH 2025

Entry Fees include GST

Prize Money does NOT include GST

Entry Fee \$1



REGULATIONS

- 1 Exhibits must be from the 2024/25 clip.
- 2 All Fleece must be the bona fide property of the Exhibitor.
- 3 Owners of registered Merino Studs are not eligible for entry.
- 4 Judges will transfer any Fleece to the Class to which, in their opinion, it rightfully belongs
- 5 If, in the opinion of the Judge, a Fleece is overgrown for its type, it will be disqualified
- 6 If, in the opinion of the Judge, a Fleece is not made up of Wool from the one Sheep, all Fleece from that Exhibitor will be disqualified
- 7 Wool not to be removed before 4 pm on Sunday 2 March 2025 and not without payment of entry fees and permission from the Steward
- 8 Exhibitors are reminded that the Society's General Regulations also apply to this Section
- 9 A judge will be appointed by the Brisbane Wool Selling Brokers' Assn.
- 10 Fleece from a property where a Merino Stud is conducted are not eligible for entry.
- 11 **N.B.** Under **NO** circumstances will **BLACK or COLOURED WOOL** be allowed in the pavilion.

SCALE OF POINTS FOR JUDGING ✍️

1. Trueness of Type	10pts	Possessing the most desirable characteristics of the Breed and taking into account Environmental conditions and area in which the Wool is grown.
2. Conformity of Length	10pts	The desired uniformity of Length throughout the entire fleece as it stands.
3. Soundness	10pts	Sufficient Tensile Strength to give the best results under the combing system.
4. Handle	8pts	The Softness and Pliancy necessary for outstanding results in spinning.
5. Colour or Bloom etc	6pts	The possession of those Characteristics for Top Grading from a Style point of view.
6. Character & Style	10pts	Even and well-defined Crimp from Butt to Tip.
7. Density	6pts	Compactness of Growth, Bulk and Breadth of Staple.
8. Evenness	10pts	The regularity of Count
9. Clean Fleece Weight	30pts	Actual Clean

TOTAL POINTS 100

CLASS

1. Fine Merino Fleece - Ewe or Wether **Trophy** donated by **Kirby & McKinlay**

2. Medium Merino Fleece - Ewe or Wether **Trophy** donated by **E & L Nielsen**

Champion Merino Flock Fleece of Show **Trophy** donated **Wycharro Pastoral Co.**

**Trophies will be presented in the Produce Pavilion
after the official welcome on Sunday of Show.**



**OUR SINCERE THANKS TO CAPTAINS MOUNTAIN WINDFARM
FOR THEIR GENEROUS
SUPPORT OF JUNIOR SECTIONS
IN THE PAVILIONS**

Visit captainsmountainwindfarm.com.au
or call 1800 313 095 to learn more

f in

**CAPTAINS
MOUNTAIN**
WINDFARM

**THANK YOU TO ALL EXHIBITORS
WHO HAVE TAKEN THE TIME
TO PREPARE ENTRIES
FOR
OUR 2025 SHOW**



2024 SHOW

**SUNDAY
*COLLECTION OF EXHIBITS***

**ITEMS
CAN NOT BE REMOVED
FROM PAVILION
(WITH EXCEPTION OF ART & PRODUCE)**

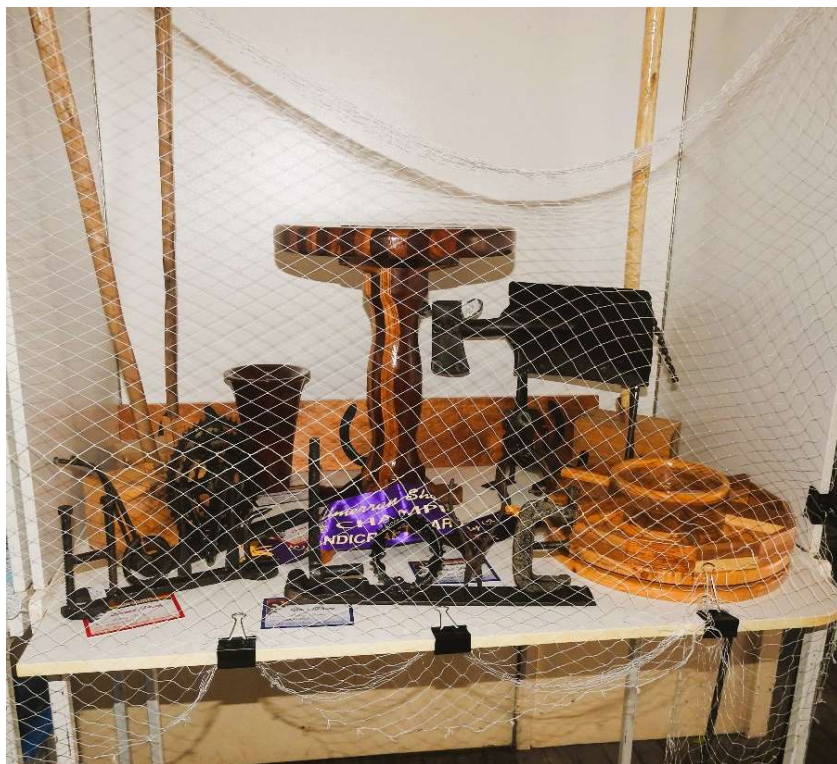
UNTIL 4.00PM

**IF YOU CANNOT BE THERE TO COLLECT
YOUR ITEMS PLEASE ARRANGE FOR
SOMEONE TO COLLECT THEM ON YOUR
BEHALF AS THE MILLMERRAN SHOW
SOCIETY WILL NOT BE RESPONSIBLE
AFTER THE SHOW**

THANK YOU



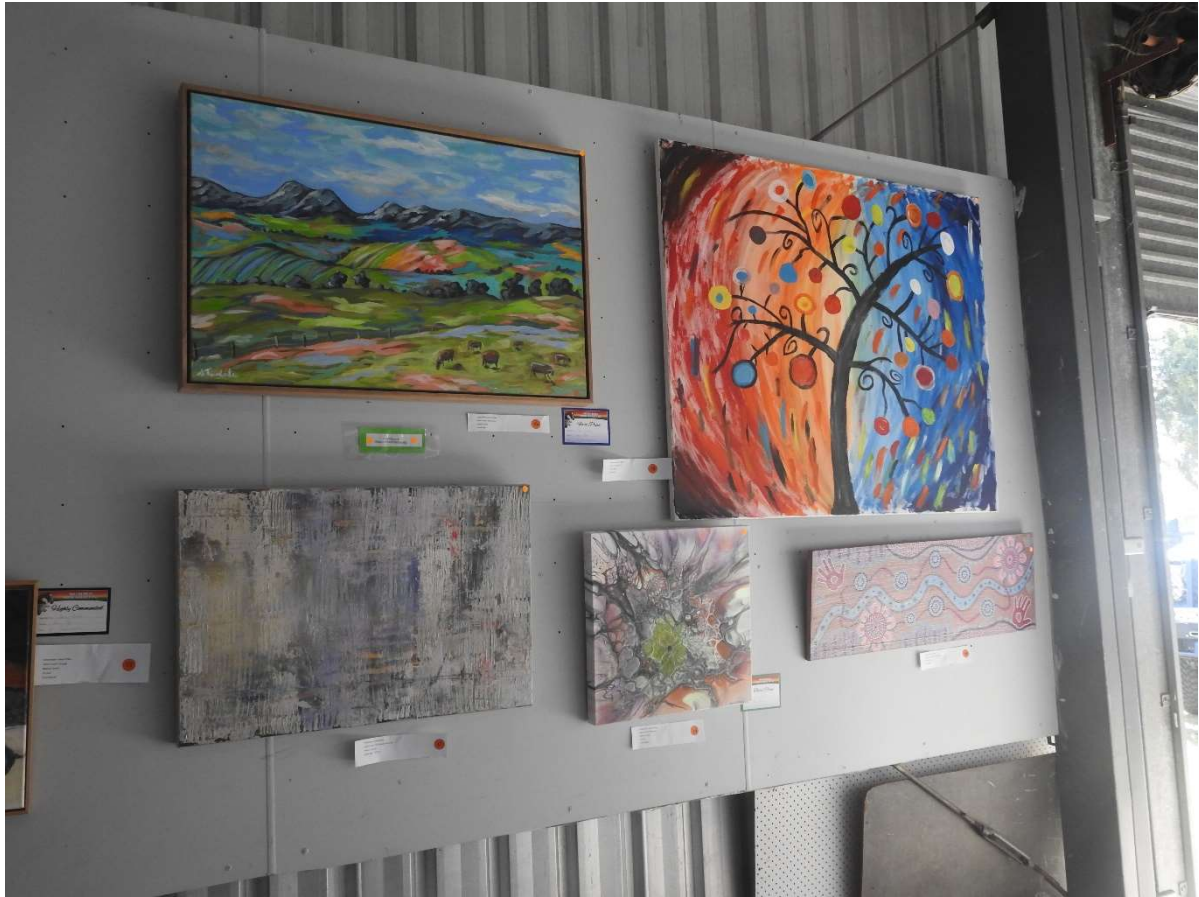
2024 SHOW





2024 SHOW





2024 SHOW





2024 SHOW



SHOW SOCIETY REGULATIONS

The attention of intending Exhibitors is drawn to the fact that Entries are accepted subject to the Rules of the Queensland Chamber of Agricultural Societies and to the Constitution and Rules of this Society.

- 1 Subject to the Committee's approval, the Judges in all cases shall have the right to award Special Prizes (although not specified in the Prize Schedule) if they consider Special Exhibits merit such recognition, and they may withhold awarding a Prize if the Exhibit is considered unworthy. In the event of there being only one Entry in any Class, the Judge may, at his discretion, issue a First Prize Ticket, but unless otherwise stated, where the First Prize exceeds 50cents, no Association money shall be paid unless the Judge especially certifies the Exhibit to be of exceptional excellence.
- 2 **Ticket Holders, on presentation of their Tickets, will be admitted to the Grounds. Non Ticket Holders will be charged Daily Admission Fee -Adults \$15, Age Pensioners \$10, High School Students 12 Yrs & over (with ID) \$10, Primary School Students 11 Yrs & under Free. Weekend Admission - Adults \$20, Age Pensioners \$15, High School Students 12 Yrs & over (with ID) \$15, Primary School Students 11 Yrs & under Free**
- 3 **Payment of Tickets - Membership: \$30.00 (2 Adults or 2 Adults & Children up to 16 years), Single Adult (no children) \$15.00, Age Pensioners (2 Adults) \$20.00, Single Age Pensioner \$10.00, (Students over 16 years are single Adult); per annum, grants Admission to the Grounds on both days of the Show. Pre Purchased : Adults \$15, Age Pensioners \$10, High School Students 12 Yrs & over (with ID) \$10, Primary School Students 11 Yrs & under Free, grants Admission to the Grounds on both days of the Show.**
- 4 **Payment of Membership gives the right to nominate a fellow Member for election to the Committee or to be in person nominated to such position, enabling the right to vote at meetings.**
- 5 **Entry Fees are 10% of the First Prize Money, except where otherwise stated. All Fees to be included with Entries.**
- 6 No Stock shall be allowed to come before a Judge bearing any Ribbon, Badge or Mark.
- 7 Exhibits in all Sections must be grown or manufactured by or be the work of the Exhibitor, or must be Bona fide Property of the Exhibitor. The Committee shall be entitled to require a declaration of ownership in any case they may think fit.
- 8 All persons in charge of Exhibits will be subject to the direction of the Stewards on the several departments of the Exhibition with reference to placing and removal of their Exhibits and taking part in the Parades. The Stewards have power to disqualify. Exhibitors must display their own Exhibits.
- 9 **On no consideration will any Exhibit be allowed to be removed or taken away until 4.00 pm on the second day of the Show or removed without permission of the Steward in charge, and it shall be a condition of entry that each Exhibitor shall hold the Association harmless and indemnified against legal proceedings arising from any loss, damage, accident, or any cause whatsoever to the Exhibits while on the Grounds.**
- 10 No Pass shall be issued to any Exhibitor.
- 11 All Pavilion Exhibits to be in position by time stipulated in Schedule for each Section.
- 12 Exhibits in collection shall not be eligible to compete separately except where specially mentioned.
- 13 The Stewards may transfer Exhibits entered in the wrong Class to the correct Class, but are unable to interfere with Judges Decision.
- 14 **Prize Money not claimed within One Week of the Date of the Show will revert to the Funds of the Society.**
- 15 Exhibits in Schoolwork Section to be Work done during the School Year 2023/2024 and under the supervision of a School Teacher.
- 16 Any Exhibitor using obscene or abusive language to be disqualified.
- 17 Any Exhibitor cruelly ill-treating any Exhibit to be disqualified.
- 18 Any NOT capable or competent Exhibitor to be removed by Steward
- 19 Exhibits must bear Tickets showing Class, Section and Number, but no name visibly attached.
- 20 Grand Parade at 1.00 pm on the Second Day of the Show. All stock judged and unjudged to take part in the Grand Parade.
- 21 All Entries to be on Association's Printed Forms.
- 22 All Exhibits in Ring Events must conform to the Printed Time Schedules, otherwise they will be disqualified.
- 23 No Collectors will be allowed on the Grounds excepting those Authorised by the Committee, and any Person infringing this Regulation may be removed by any Member of the Committee, with or without the assistance of the Police.
- 24 Showmen's Guild Personnel are not allowed to use loudspeakers or make any other unseemly noise that interferes with the broadcasting from the Ring.

MILLMERRAN SHOW SOCIETY INC

Show Secretary:	Lyn Kirby	0429954151
President:	Matt Clark	0428205487
Committee Secretary:	Karen Dieckmann	0447543149